



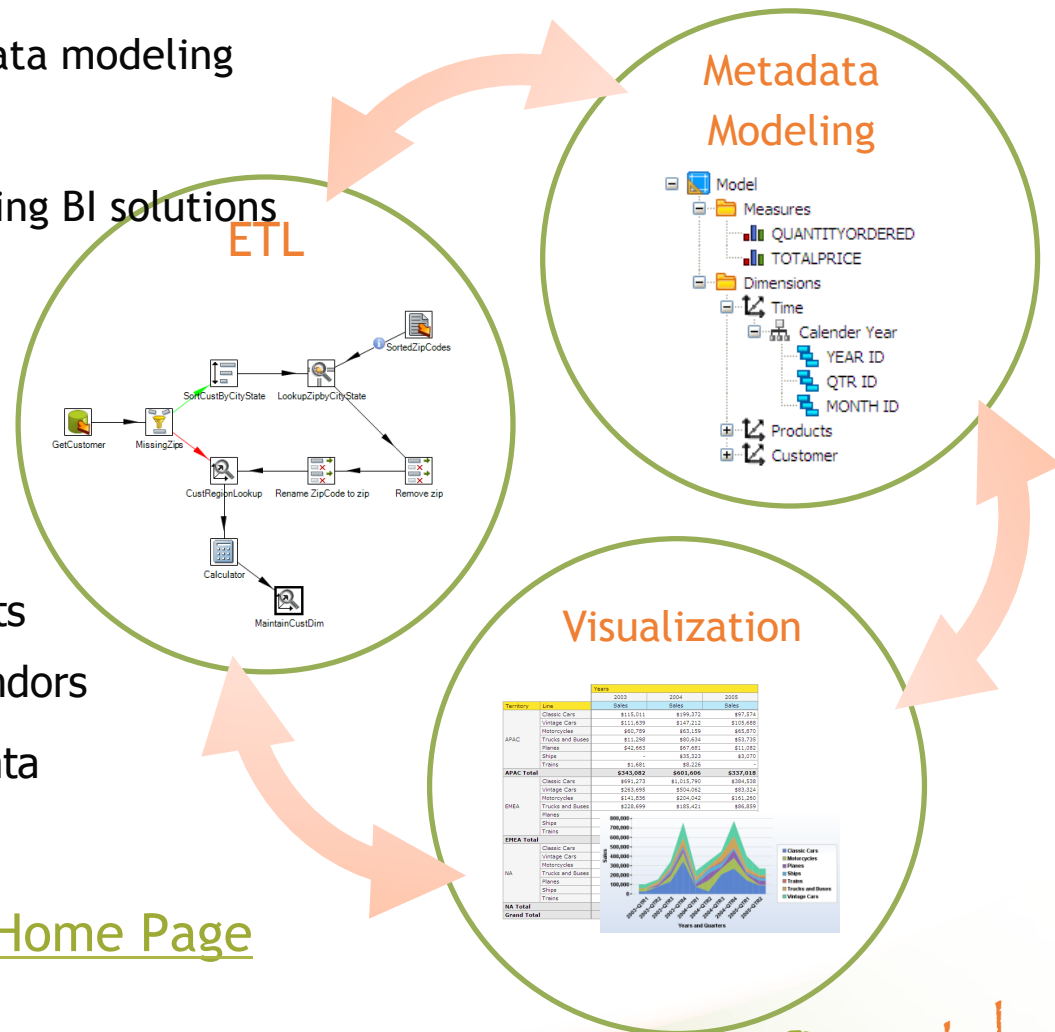
Update on Agile BI Progress

Jake Cornelius
March 2, 2010

Agile BI Initiative

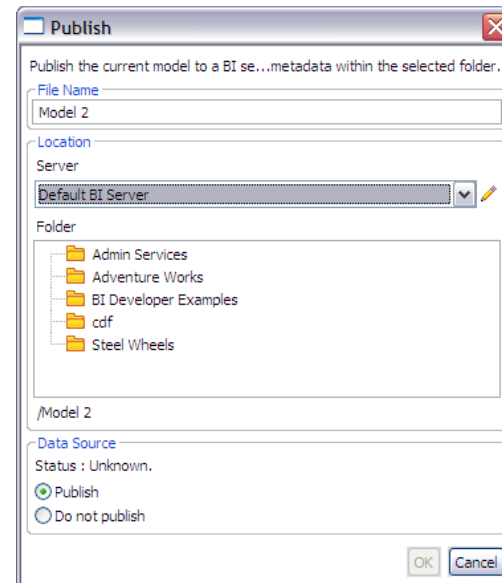
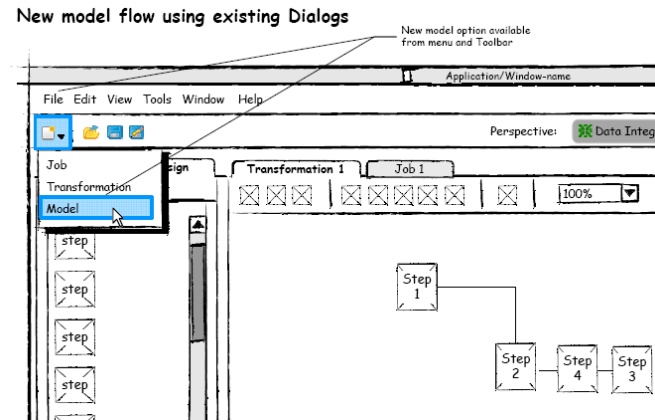
Closed loop design environment for building end-to-end BI solutions

- Seamlessly integrates ETL, metadata modeling and data visualization
- Quick, iterative approach to building BI solutions
- Dramatically reduces license fees
- Faster time to value – insight in minutes vs. months
- Reduce risk associated with projects cobbled together from multiple vendors
- Delivered as plugins to Pentaho Data Integration
- Learn more at the [Agile BI Home Page](#)



What's Left for Phase 1?

- New Model Flow
- Content Publishing
- Cleanup
 - Hide unnecessary UI elements
 - Progress Indicators
 - Menubar organization
 - Bugs, Bugs, Bugs...



The Road Ahead

- Star/Snowflake Schema Support
- Top down modeling using generated sample data
- Iterative Model refinement through Wizards
- Thin client, cloudy wizard for Evaluating Pentaho using your Data
- Data Warehouse Template generation
- PDI Plugins for related activities
 - Data Lineage
 - Data Profiling
 - Data Quality

